

Porthole hinge

Applications

Portholes
 Washing machines

Geometry

Footprint: W, H, L
 Fulcrum position (respect to the base): X, Y
 Parallel dimension (between base and door): Q

Technical features

Fulcrum position - Rotation X=25.9mm Y=9.5mm
 Parallel dimension (between base and receiver) Q: 7mm
 Footprint: W=27.5mm, H=130.7mm, L=65mm
 Type of fixing: front holes

Functionality

Rotation: 0 - 90°

Removability

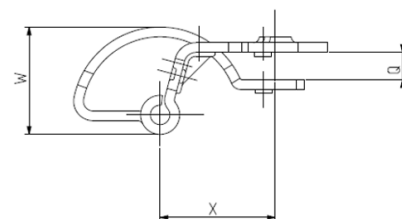
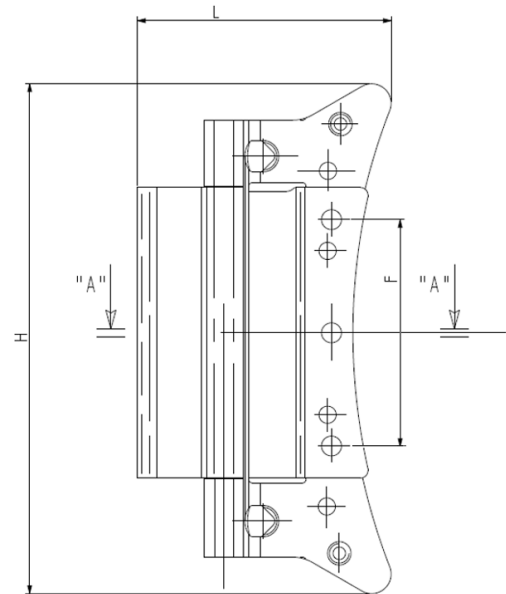
Through the M5 screws on the mobile part

Performance

Operating temperature: 130°C
 Resistance to static load: till 20kg
 Dynamic test: till 20k cycles

Receiver

Distance between holes for fixing F= 58mm
 Possibility of lateral fixings: no



2D Drawing

The following drawing shows the main functional dimensions.
Possibility of customized designs based on customer needs

