

Porthole hinge

Applications

✓
Portholes
Washing machines

Geometry

✓
Footprint: W, H, L
Fulcrum position (respect to the base): X, Y

Technical features

✓
Fulcrum position - Rotation X=44mm Y=50mm
Parallel dimension (between base and receiver) Q: 10.4mm
Footprint: W=30.9mm, H=194.2mm, L=77.6mm
Type of fixing: front holes

Functionality

✓
Rotation: 0 - 180°

Removability

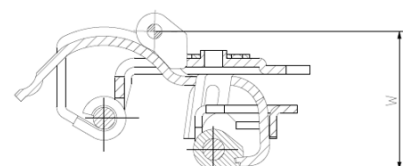
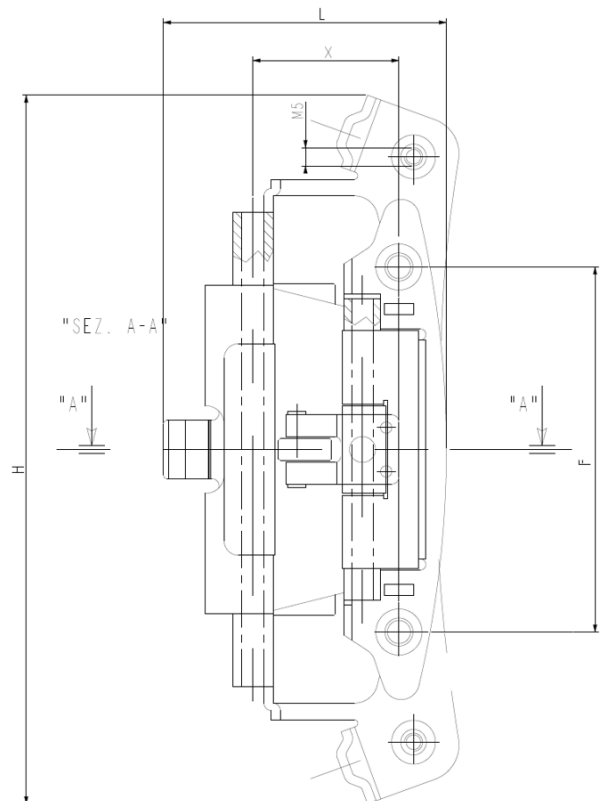
✓
Through the M5 screws on mobile part

Performance

✓
Operating temperature: 130°C
Resistance to static load: till 20kg
Dynamic test: till 20k cycles

Receiver

✓
Distance between holes for fixing F= 100mm
Possibility of lateral fixings: no



2D Drawing

✓
The following drawing shows the main functional dimensions.
Possibility of customized designs based on customer needs

