

Lid hinge

For lid weights up to 10Kg

Applications

Lids
 Washing machines
 Tops
 Kitchens

Geometry

Footprint: \emptyset, L
 Fulcrum position: on the longitudinal axial
 Parallel dimension (between base and receiver): Q

Technical features

Fulcrum position - Rotation on the longitudinal axial
 Parallel dimension (between base and receiver) Q: 4mm
 Footprint: $\emptyset=20\text{mm}, L=107\text{mm}$
 Type of fixing: sliding inside the housing

Functionality

Rotation: 0 - 100°
 Balancing: 60 - 90°
 Closing forces: 12 - 20N depending on the application and customer needs
 Pre-load position: available at 100°

Removability

Sliding outside in axial direction from the housing;

Performance

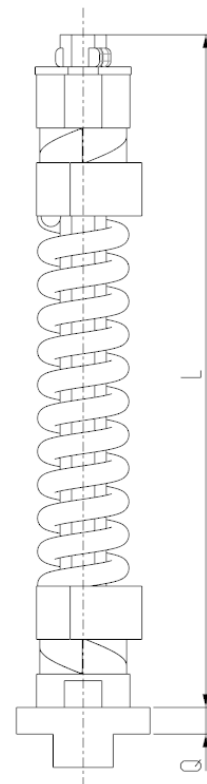
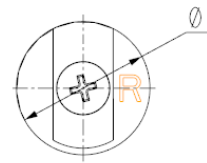
Operating temperature: 120°C
 Dynamic test: till 20k cycles

Compliance

Hinge complies with VDE anti-crushing regulations
 Possibility to install two springs in series for heavy lid weights

Receiver

Possibility for the customer to define his own receiver or integrate it with the oven structure



2D Drawing

✓
 The following drawing shows the main functional dimensions.
 Possibility of customized designs based on customer needs

